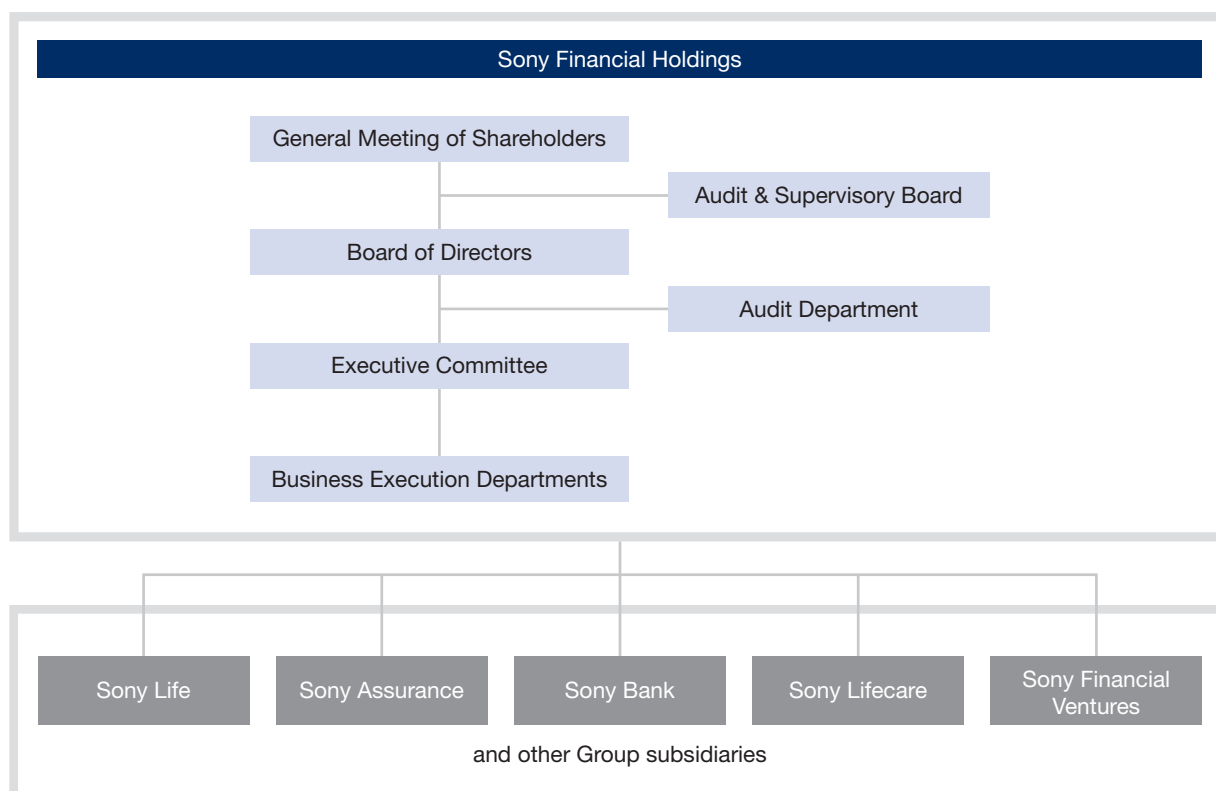


Corporate Profile (As of March 31, 2020)

Name	Sony Financial Holdings Inc.
Established	April 1, 2004
Head office	1-9-2, Otemachi, Chiyoda-ku, Tokyo, Japan
Business	Management control of subsidiaries (life insurance companies, non-life insurance companies, banks and others) specified by the Insurance Business Act of Japan and the Banking Act of Japan and all duties incidental to that role
Number of employees	SFH: 84 (Consolidated: 11,487, Life insurance business: 8,739, Non-life insurance business: 1,347, Banking business: 644, Others: 690, Parent: 67)
Common stock	¥19,994 million

Notes: 1. The number of employees of SFH includes 9 belonging to the life insurance business, 1 belonging to the non-life insurance business, 7 belonging to the banking business, and 67 belonging to the parent
 2. The number of employees stated in "Others" is the number of employees belonging to the nursing care business and venture capital business at subsidiaries

Organizational Chart



Profiles of Group Companies (Main subsidiaries) (As of July 1, 2020)

Life Insurance Business

Name	Established	Head office	Business	Common stock (Millions of yen)	Share ownership
Sony Life Insurance Co., Ltd.	August 10, 1979	Chiyoda-ku, Tokyo, Japan	Life insurance business	70,000	Sony Financial Holdings Inc. 100%
— Sony Life With Insurance Co., Ltd.	August 29, 2007	Shibuya-ku, Tokyo, Japan	Life insurance business	21,500	Sony Life Insurance Co., Ltd. 100%
— SA Reinsurance Ltd.	October 29, 2009	British Bermuda	Reinsurance business	15,900	Sony Life Insurance Co., Ltd. 100%

Non-life Insurance Business

Name	Established	Head office	Business	Common stock (Millions of yen)	Share ownership
Sony Assurance Inc.	June 10, 1998	Ota-ku, Tokyo, Japan	Non-life insurance business	20,000	Sony Financial Holdings Inc. 100%

Banking Business

Name	Established	Head office	Business	Common stock (Millions of yen)	Share ownership
Sony Bank Inc.	April 2, 2001	Chiyoda-ku, Tokyo, Japan	Banking business	31,000	Sony Financial Holdings Inc. 100%
— Sony Payment Services Inc.	September 1, 2006	Minato-ku, Tokyo, Japan	Credit card settlement services	488	Sony Bank Inc. 57%, Four other companies
— SmartLink Network Hong Kong Limited	February 27, 2013	Hong Kong, China	Credit card settlement services	13	Sony Payment Services Inc. 100%
— SmartLink Network Europe B.V.	August 1, 2019	Netherlands	Credit card settlement services	10	Sony Payment Services Inc. 100%

Nursing Care Business

Name	Established	Head office	Business	Common stock (Millions of yen)	Share ownership
Sony Lifecare Inc.	April 1, 2014	Shibuya-ku, Tokyo, Japan	Management control of companies handling the nursing care business, and other duties incidental to that role	2,625	Sony Financial Holdings Inc. 100%
— Lifecare Design Inc.	October 5, 1999	Shibuya-ku, Tokyo, Japan	Planning, development and operation of nursing care homes	2,295	Sony Lifecare Inc. 100%
— Proud Life Inc.	July 3, 2006	Yokohama, Kanagawa Prefecture, Japan	Management, operation and planning of nursing care homes	3	Sony Lifecare Inc. 100%

Other (Venture Capital Business)

Name	Established	Head office	Business	Common stock (Millions of yen)	Share ownership
Sony Financial Ventures Inc.	July 10, 2018	Chiyoda-ku, Tokyo, Japan	Venture capital business	10	Sony Financial Holdings Inc. 100%

Information on Common Stock, Shares Outstanding

Date	Increase in Issued Shares	Total Number of Shares Issued	Increase in Common Stock (Millions of yen)	Common Stock (Millions of yen)	Increase in Capital Surplus (Millions of yen)	Capital Surplus (Millions of yen)
April 1, 2019 – March 31, 2020	24,422	435,087,405	31	19,994	31	195,371

Note: Issue price and amount added to common stock for increases due to new shares issued as restricted stock compensation (third-party allocation) are as follows:
 Issue price: ¥2,564 per share
 Amount added to common stock: ¥1,282 per share

Stock Exchange Listing (As of March 31, 2020)

The First Section of the Tokyo Stock Exchange (Securities code: 8729)

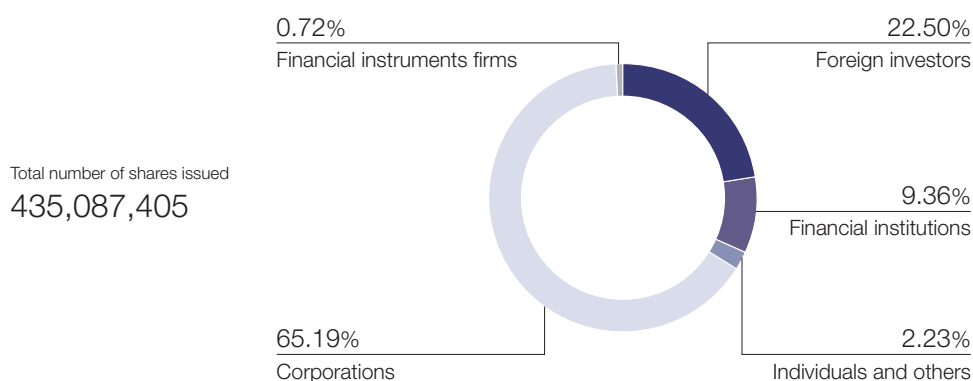
Major Shareholders (As of March 31, 2020)

Name	Number of Shares Held	Percentage of Ownership (excluding treasury stocks) (%)
Sony Corporation	283,050,000	65.06
JP MORGAN CHASE BANK 385632	21,698,728	4.98
The Master Trust Bank of Japan, Ltd. (Trust Account)	14,255,200	3.27
SSBTC CLIENT OMNIBUS ACCOUNT	9,483,551	2.18
Japan Trustee Services Bank, Ltd. (Trust Account)	9,172,500	2.10
JP MORGAN CHASE BANK 385635	3,996,708	0.91
GOLDMAN, SACHS & CO. REG	3,545,322	0.81
THE BANK OF NEW YORK MELLON 140042	3,356,149	0.77
Japan Trustee Services Bank, Ltd. (Trust Account 5)	3,301,400	0.75
JP MORGAN CHASE BANK 385151	2,730,852	0.62

Notes: 1. Capital Research & Management Company reported in the Change Report Pertaining to Report of Possession of Large Volume it submitted on August 22, 2019 that, as of August 15, 2019, it owned 29,047,200 shares of SFH (6.68% of total number of shares issued). However, we did not include the firm's name among the Major Shareholders above as we could not confirm the beneficial share ownership as of March 31, 2020
 2. The tender offer for the shares and the stock acquisition rights of SFH as announced by Sony Corp. on May 19, 2020 was completed on July 13, 2020. As a result, Sony Corp. holds 406,626,238 shares of SFH (ratio of the number of shares held to the total number of issued shares (excluding treasury shares): 93.47%) as of July 20, 2020

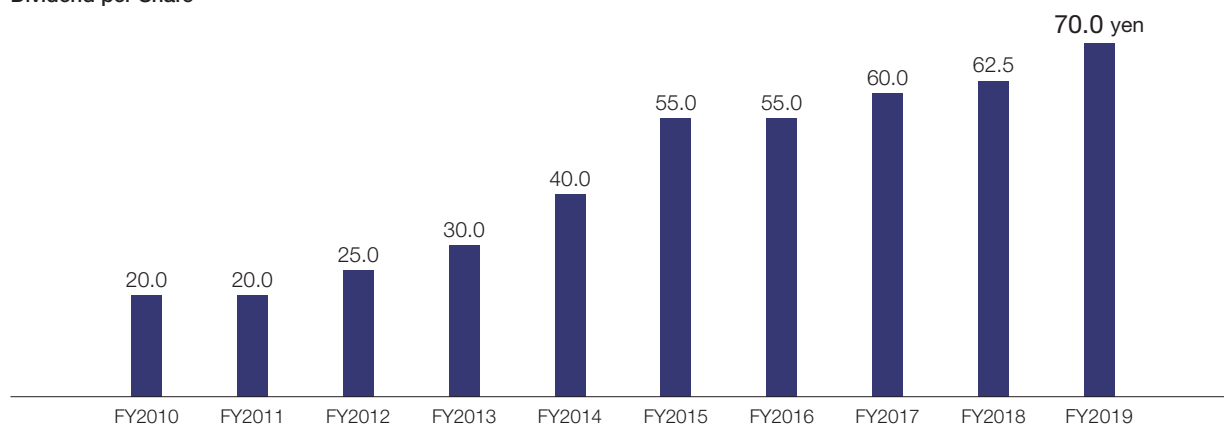
► P85 Significant subsequent event

Shareholding by Shareholder Type (As of March 31, 2020)



Dividends (As of June 23, 2020)

Dividend per Share



- Notes: 1. Although a stock split was conducted during fiscal 2011, the dividend per share figures are calculated assuming that the stock split was conducted at the beginning of fiscal 2010
2. SFH resolved at the meeting of its board of directors held on May 19, 2020 not to declare a dividend for the fiscal year ending March 2021 on the condition of the completion of the tender offer for the common shares and the stock acquisition rights of SFH conducted by Sony Corp. (the "Tender Offer"). As stated in the "Announcement Regarding the Result of Tender Offer for Shares, Etc. in Sony Financial Holdings Inc. by Sony Corporation, the Controlling Shareholder", dated July 14, 2020, SFH will not declare a dividend for the fiscal year ending March 2021 due to the completion of the Tender Offer on July 13, 2020

Total Shareholder Return

	(%)				
	FY2015	FY2016	FY2017	FY2018	FY2019
SFH	77.3	98.3	109.0	120.1	110.2
<Comparative indicator: TOPIX>	<87.3>	<98.0>	<111.2>	<103.1>	<90.9>

Share Price (As of June 30, 2020)

