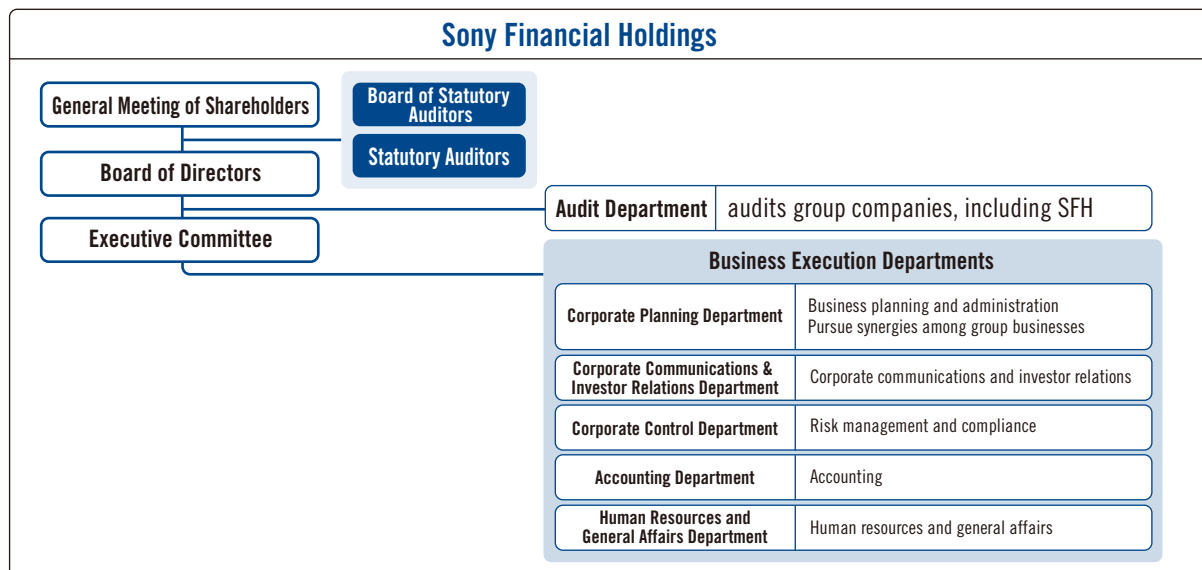


Corporate Information

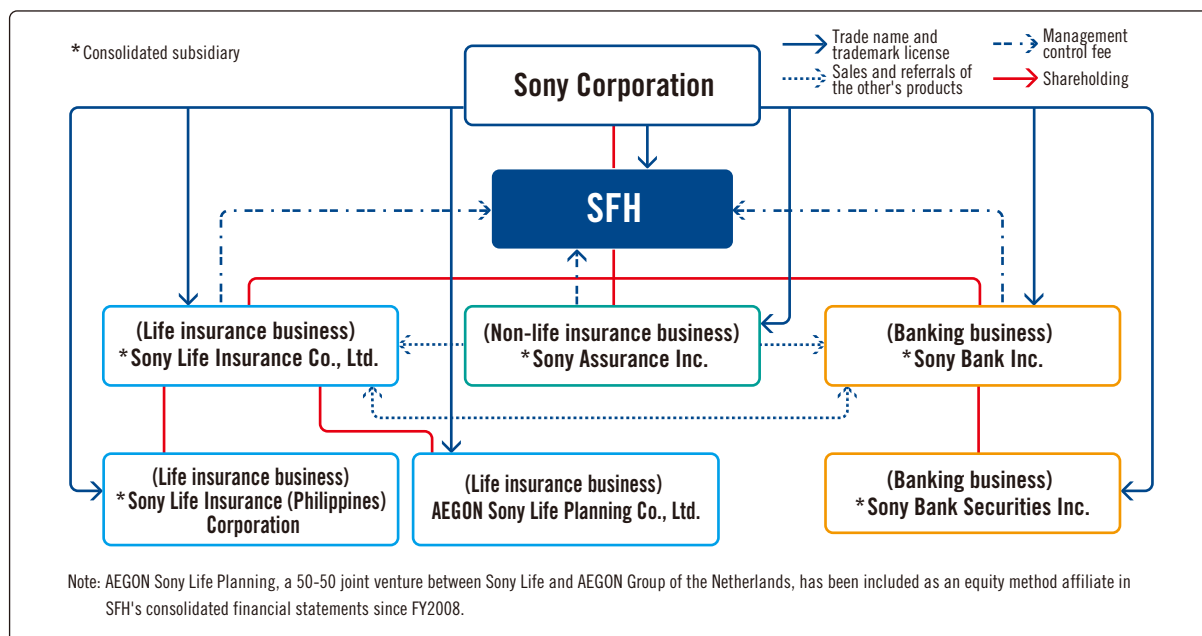
Business

Management of subsidiaries involved in life insurance, non-life insurance, banking, and other subsidiaries based on the provisions of the Insurance Business Law and the Banking Law and other incidental operations.

Organizational Chart (As of July 1, 2009)



Organizational Chart of Business Operations (As of March 31, 2009)



Number of Employees (As of March 31, 2009)

SFH	Life Insurance Business	Non-Life Insurance Business	Banking Business	SFH Group
30	5,631	752	214	6,627

Note: SFH employees include those on loan from Sony, Sony Life, Sony Assurance, and Sony Bank.